



NOVEMBER 1993

**FOUNDATION
BEEFMASTER
ASSOCIATION**

100 LIVESTOCK EXCHANGE BUILDING
4701 MARION STREET
DENVER, COLORADO 80216

Volume XX11, No. 10

FOUNDATION FACTS

FOUNDATION BEEFMASTER ASSOCIATION'S 22ND ANNUAL CONVENTION HELD IN COLORADO SPRINGS, COLORADO

Mother nature cooperated almost perfectly for those attending the 22nd Annual Foundation Beefmaster Association convention in Colorado Springs, Colorado. Every rancher in the world likes a little moisture now and then, but none of them like to work in it.

Fittingly, snow fell lightly almost all day Thursday, October the 4th and Friday, the 5th. While the snow was falling the work of the convention centered on indoor meetings. By Saturday all of the snow was gone and the weather was almost perfect for a tour of the Lasater Ranch at nearby Matheson, Colorado. The Lasater Ranch is home to the foundation herd of the entire Beefmaster breed.

The business of the convention got underway with committee meetings on Thursday, November 4th. Once again this year, these meetings found all of the committee members as well as a number of non-committee members taking an active role in the discussion.

A special "Meet the Candidates" reception was held on Thursday evening. A lot of very good food, including some of the world's best roast beef, was served and all of the candidates running for board positions were introduced. In addition to meeting the candidates, this traditional gathering provided a wonderful opportunity for the members to visit with other purebred FBA Beefmaster breeders.

The general membership meeting was called to order by President O.C. Rampley Friday morning, November 5th. Following adoption of the minutes from the previous meeting, various committee reports were given.

In his President's Report, O.C. spoke of the traveling he did during the previous year. Over the course of the year, he travelled to all of the seminars and field days presented by FBA satellites. He pointed out the continued success of the satellite program. "The satellites", he said, "are work-

ing hard with their field days, forage tests and sales. They expose a lot of people to the Beefmaster Breed and that helps all of us." President Rampley also extended his gratitude to the satellites for the hospitality they had shown to both he, and the association's Executive Secretary, Mary Wilkinson.

In her report, Mary Wilkinson, who also travelled to all of the satellite events, echoed President Rampley's feelings regarding the success of both FBA and its satellite organizations.

Mary reported that 1993 has been an exceptionally busy year for the office. In addition to the normal work load, the office also moved into a larger space downstairs and handled a record number of certificates. The heavy demand for certification of cattle was due, in part to the new pricing structure adopted by the Board of Directors last year. Mary pointed out the importance of the lower certification price, but also stressed that FBA's membership and cattle numbers were both growing. She said "It's not just certification work . . . all of the activity that comes through the office has grown." Mary added that, "this level of activity emphasizes the strength and growth of the association." She took a minute to also thank the members of her staff for their assistance during the year.

Laurie Lasater of San Angelo, Texas at the request of President Rampley, addressed the convention on the subject of the "scale house formula." Mr. Lasater said that the biggest problem facing the cattle industry today is that most beef producers do not realize what kind of produce the slaughter house is really looking for. Lasater stressed his point by saying, "The packers are the one that control the market and they are paying a premium for cattle that

(continued on page 3)



Editor's Mail

Dear Mary,

Our 30th Anniversary Sale was a great occasion. We sold 262 excellent **Beefmaster** bulls to 40 buyers from seven U.S. states and three states in Mexico, in three hours and thirty minutes. Twenty-six of the buyers were repeat customers. Annette, Lorenzo and I are deeply grateful to all who participated.

Our pre-conditioning program is working well. We now have 400 calves at the bull facility. They clearly demonstrate the excellence of our breed in feedlot.

We have for sale 122 First-Cross and 87 Second-Cross bred heifers, all set to start calving February 10th. The calves at the facility are out of similar females.

Copies of my talk given in September, "Matching Cattle to Range Environments" are available if you'd like one.

You are cordially invited to come see these bred heifers and the calves being pre-conditioned. Best regards.

Sincerely,
Laurence M. Lasater

Dear Mary:

It's time for us to let the rest of the country know that the beef industry supports the North American Free Trade Agreement (NAFTA). Critics of the NAFTA have based their arguments on the scare tactics and fear of the unknown. It's time for us to tell the overruling positive aspects of the NAFTA, and the lost opportunities if it is not passed.

NCA has joined a broad-based coalition of agriculture groups called Ag for NAFTA to push for passage of the agreement. Our strategy has been to focus on an informational campaign to heighten grassroots awareness of the NAFTA. When it is presented to Congress for approval, hopefully this fall, we will be lobbying hard for its passage. NCA Foreign Trade Committee Chairman Caly Daulton wrote a very good article about why the NAFTA is good for the beef industry in the August 1993 issue of National Cattlemen.

NCA needs your help in this effort. As the executive of Foundation Beefmaster Association, you are in an important position to generate much needed grassroots support for the NAFTA. Most importantly, your members of Congress need to hear from you and as many of your members as possible in support of the NAFTA. I urge you to

meet with them or send letters immediately.

If you have not already done so, please consider running an article about the NAFTA in your association's newsletter or magazine, urging your members to send their support of NAFTA to Congress. I also have enclosed a sample letter-to-the-editor and op/ed piece that I encourage you to try to place in as many newspapers as possible. You may want to tailor them to the specifics of your state. As you are aware, small newspapers welcome submissions from citizens in their communities. Also, please make yourself available as a speaker for radio programs or local civic group meetings.

It will not be easy to get the NAFTA passed this year, but I believe it will be passed with enough grassroots support. Thank you for your help to promote free and fair trade for the U.S. beef business.

Sincerely,
Roger A. Stuber

A TIME FOR THANKS!

Unfortunately, all of us have a nasty habit of taking people for granted, whether it be family members, friends, co-workers or other associates. We probably don't express our appreciation as often as we should. Why are the words "thank you" so difficult to say?

A simple "thank you" or "thanks" has great power. It can lift spirits, boost morale and inspire dedicated work. It pays to say "thank you" often and it also helps to be specific. It shows that you really notice and are appreciative.

Here at FBA, we want you to know that you're not taken for granted. After all, where would we be without you? So, here it is . . . a big **THANK YOU** from your association.

We truly appreciate not only the business you bring to FBA, but also your confidence in us to do your job carefully and effectively. We won't disappoint you!

We hope each and every one of you, our valued members, have a **Happy Thanksgiving!**

Mary, Phyllis & Barbara



FBA'S 22ND ANNUAL CONVENTION

(continued from page 1)

most closely fit their box." He continued, "Formula buying is a fact today in the carcass trade and it shows no sign of diminishing in the future." In a reference to Beefmaster cattle, Lasater stated, "We have demonstrated the clear superiority of our cattle."

Mr. Lasater concluded his comments with a suggestion that, as an association, FBA needed to generate some type of data that might help all of the members sell their cattle. As an example, he pointed out the remarkably complete records that are kept by Dr. William Broussard in Melbourne, Florida. It was Mr. Lasater's contention that records of this type might help in the establishment of meaningful data that could be used to help evaluate Beefmaster cattle and their progeny.

Committee reports were given on the Finance committee by Jed Flake, Gerry Holmes delivered the Membership committee report and Carson Scheller gave both the Public Relations committee report and the NCA report. Satellite Reports were given by Danny Safrit, Gayle Evans, Barbara Truitt, Milford Denetclaw, Ward Burroughs, Don Langston, and Howard Froud. Gerry Holmes presented a number of membership awards including the associations top membership award to Laurie Lasater.

One of the primary duties of the convention was the election of new board members. Newly elected to the Board of Directors were Joyce Campbell of El Venado Beefmasters in San Antonio, Texas; Gayle Evans of Evans Beefmasters at Enterprise, Utah; Steve Flake from F Bar Cattle Company, Snowflake Beefmasters in Snowflake, Arizona and Milford Denetclaw of Denetclaw Beefmasters in Shiprock, New Mexico.

The four new Board members replace four outgoing members, O.C. Rampley of Silverton, Texas immediate Past President; Jed Flake of Snowflake, Arizona; Ron

Freeman from Jacksonville, Illinois and Dr. Watt Casey from Albany, Texas.

Following the general membership meeting, the new board held their first meeting and elected officers for 1994. Gerry Holmes of Falkville, Alabama, was elected as the President of the association, and Carson Scheller of Scheller Beefmasters in Los Alamos, California was elected as Vice President.

Other elected officers are, Barbara Truitt of Sheldon Missouri, Secretary; and Joyce Campbell of San Antonio, Texas, Treasurer.

Following the General Membership meeting, the members loaded onto buses that took them to a special dinner and melodrama held at the Iron Springs Chateau restaurant in Manitou Springs, Colorado.

As mentioned earlier, Saturday was reserved for a tour of the Lasater Ranch in Matheson, Colorado. This is always a treat for everybody attending. The cattle, as always, presented the epitome of the breeds characteristics, particularly disposition. It was obvious that the cattle were not disturbed by the appearance of so many visitors . . . many of whom were wandering among bulls, the mother cows and their calves, often feeding all three by hand. This is certainly one of the most famous cattle herds in the world and when you see them, you quickly realize why.

Also, as always the welcome mat was out and the almost equally famous Lasater hospitality was warmly extended to everyone by Dale, Laurie and "Mr. Tom." It was a fine and rewarding day.

The entire convention was planned and implemented by Mary Wilkinson and her staff in the FBA office.

BEEF "ON" FORAGE BEEFMASTER BULL SALE

The Central Texas Beefmaster Breeders held their Seventh Annual Bull Sale on Saturday October 16th, at Brenham, Texas. Sixty four buyers from six states paid \$226,600 on the 111 high quality bulls to average \$2,038. A special offering of 12 bred heifers averaged \$1,366.

Spade Beefmasters of Menard, Texas bought the high selling bull for the second year in a row. Lot #38 a Frenzel Beefmaster, Temple, Texas consignment brought a top bid

of \$5,200. Volume purchaser was Arnold Jensen of Lexington, Texas with five bulls for \$12,900 and Powell Hudson of Port Gibson, Mississippi who purchased 10 bulls.

Plans are underway for the Eighth Annual Test and subsequent sale with over 160 consignments. For information about the test or sale, contact Gary Frenzel at (817) 983-2901



SATELLITE NEWS

Caro and I returned home Sunday night from Brenham feeling good about the bull sale, then measured an incredible 6" of rain by Wednesday. What a way to end a week-end.

The sale was held Saturday, October 16, with impressive results. One hundred twelve bulls brought an average price of \$2,038. The high-selling bull, raised by Gary Frenzel was purchased by John Swarengen and Bobby Waddell of the Spade Ranch for \$5,200. Second high selling bull, also from Frenzel Beefmasters, was purchased by Doss Brown of Lexington for \$4,900. Thirteen FBA members purchased bulls at the sale.

Twelve bred females brought an average price of \$1,367. Top selling female, raised by Gary Frenzel (who else?) was purchased by Ed Goodwin of Troy, Texas for \$1,600. O.C. Rampley paid \$1,550 for the second high selling female, a Tate Beefmaster heifer.

The Friday night steak supper for consignors and buyers was good, but we missed the superchef from previous sales. He wouldn't say why, but Ron Ranly fired himself this year and we had to settle for a catered meal.

We need to be thinking about nominees for CTBB Directors for next year. In order to meet the requirements of the by-laws, we need to assemble a list of at least two candidates within the next 30 days or so. Give this matter some thought, then call Steve McFaul if you have a candidate in mind.

We welcome the following new members to CTBB. Please add their names to your 1993 directory:

Bob Boswell

Allan and Evelyn Lanik
ROCKY CREEK BEEFMASTERS
Rt. 1, Box 139C
Bay City, TX 77414
409/843-5033 or 564-2963

Larry and Janet Miller
MILLER ROCKING M BEEFMASTERS
940 Mamalu
Bastrop, TX 78602
512/321-6720

← NORTH AMERICA'S FIRST CONFERENCE ON GRASS FINISHED BEEF SET TO ROLL →

Argentine grass finished beef is considered by most international gourmards to be the world's best. Argentina's harsh climate and the way its cattle are slaughtered year-round are similar to that of North America, so its production model is particularly useful as a study guide for American graziers. The North American Grazing Conference, America's first conference on grass finished beef, will explore this model with featured Argentine grazer and consultant, Pedro Landa on December 1, 2 and 3 at the Coliseum Ramada in Jackson, Mississippi.

"Most of the U.S. lacks the cheap grain resources needed for grain finished beef. Grain feeding is now concentrated in a very narrow band from the Texas panhandle to Nebraska," explained Allan Nation, editor of the Stockman Grass Farmer magazine, sponsor of the conference. "As a result, the average American slaughter steer rides 1500 miles from where he was born to where he will be fed and slaughtered. In many cases, the cost of trucking the animal to the feedlot exceeds the profit made from feeding it," he said.

While most of the world's beef cattle are slaughtered directly off grass, the U.S. has developed a grading system based on intramuscular fat content. This fat can only be produced by grain feeding but is impossible to remove by the consumer by trimming. In contrast, grass finished animals deposit body fat on the outside of their carcasses where making it easily trimmed by the consumer.

The U.S. grading system requires current grass finishers to market their meat directly to the consumer rather than sell it to an established slaughter plant. While direct mar-

keting is more time-consuming, it is usually more profitable to the grazier.

"Joel Salatin (a conference speaker) nets \$600 to \$800 a head on his direct marketed, grass finished steers," Nation said. "Such high returns per head allow even relatively small producers to enjoy an excellent income."

Nation said the conference will explore selling farm raised beef and lamb as cooked meat at an Argentine style parillada at a county or church fair. "Argentine cooking methods involve great theater and flair," he said. "When you figure you can double the value of raw meat by cooking it, I think this is an option that needs to be explored and we're going to take a hard look at it."

Nation said that while this agenda may sound esoteric virtually all of the information could be used by graziers who wanted to sell through current marketing outlets. "The heart of this conference is how to keep beef animals gaining well on pasture, or cheap stored pasture, 365 days a year. You can use these production techniques and sell the cattle as feeder cattle to the traditional markets if you like," he said.

"Grass finishing is just another option and one most North American graziers have never heard about. This conference is where graziers can see if grass finishing is for them or not."

For full conference and registration information, contact the Stockman Grass Farmer at 1-800-748-9808.

LASATER “The Pedigree is in the Name” BEEFMASTERS

FOUNDATION HERD OF THE BEEFMASTER BREED

(719) 541-BULL

Evenings: (719) 495-3432



2-year-old heifers, Evan Trap

November 15, 1993

Dear Friends:

Our heartfelt thanks to you our customers who have made this bull contract a success for more than four decades. Few products on the ever-changing U. S. business scene reach the milestone we hit as we mail out this 45th annual Lasater Beefmaster Plan Bull Contract.

We hope you will be with us for this landmark anniversary of a once radical genetic program which even today remains unique within the seedstock business. As a small token of appreciation to our loyal customers, all 1994 buyers will be included in a drawing for three Lasater Beefmaster pairs, with calves sired by top Lasater Beefmaster herd sires.

All cow and bull contracts postmarked by November 30 will be put into a drawing on December 9 to establish the order of selection. The schedule will be:

September 13, 1994: 10 a.m. Bred Cow and Heifer Selection
4 p.m. Retired Herd Sire Auction
September 14 & 15: 8 a.m. Yearling Bull Selection

The seventy-five yearling bulls sold under this contract will be offered in three price ranges (see price list on the back of the contract). A buyer may put in a contract for a bull from any of the groups, from two groups or from a single group. For example, a buyer may draw in the first 25, the first 50, the last 25 or he may draw in all these groups until his contract is filled. A purchaser interested in drawing from only one or two of the price ranges should so advise on the contract.

Should you wish to contract more than one bull, you may sign a contract for each bull; or you may put two or more bulls on a single contract.

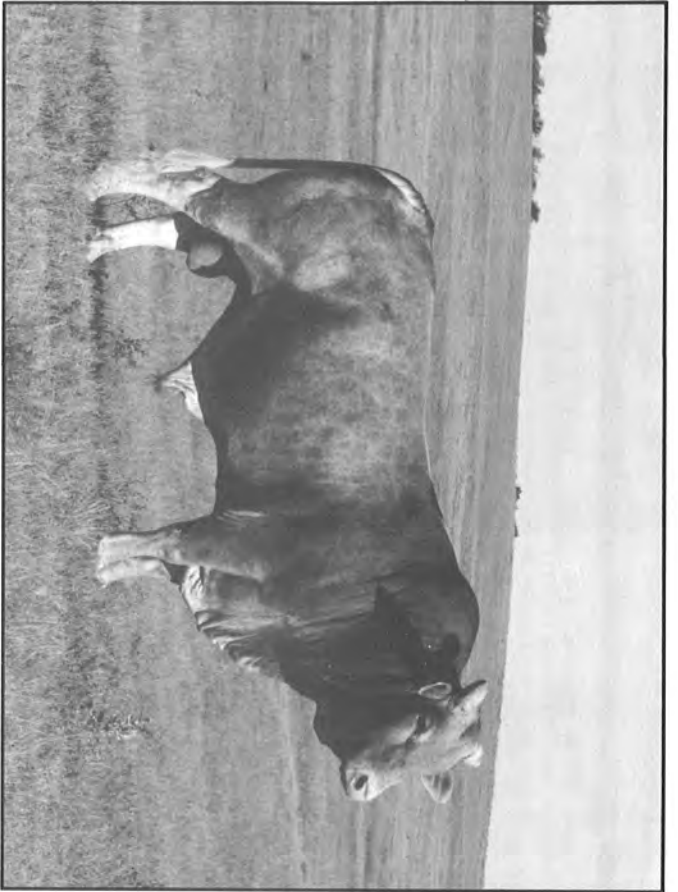
The females offered under this contract will be put with our top herd sires on May 15, and will be guaranteed safe in calf. These bred females are offered in groups of three. They are priced on a sliding scale from \$5,400 to \$4,450 per group.

Yours sincerely,

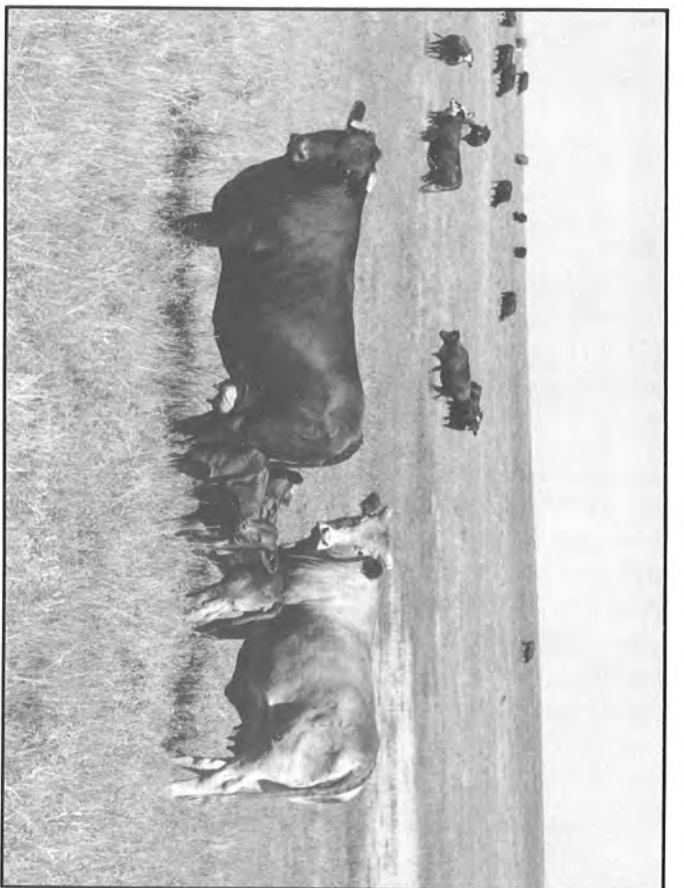
The Lasater Ranch

By 
Dale Lasater

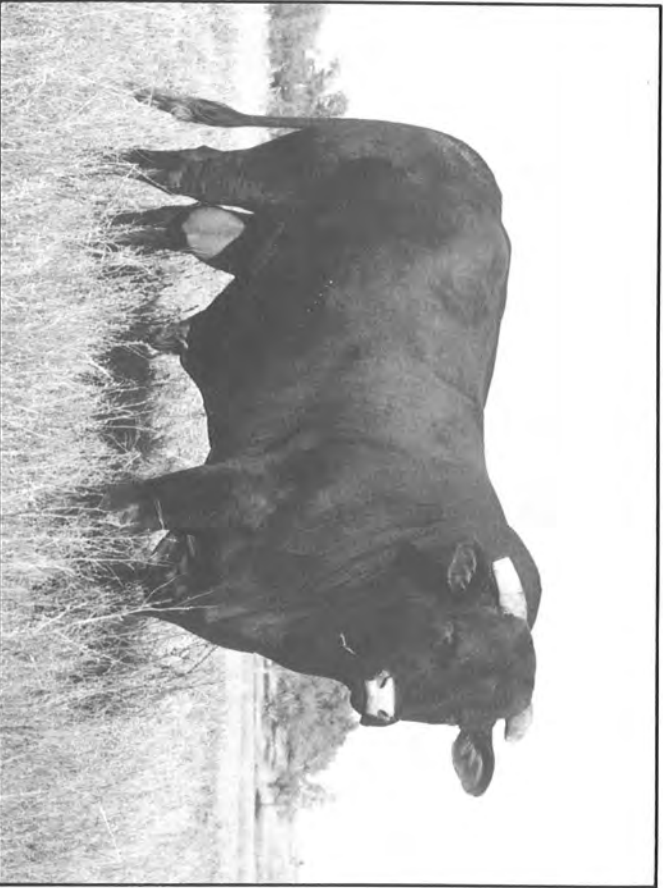
DL:le
Encs.



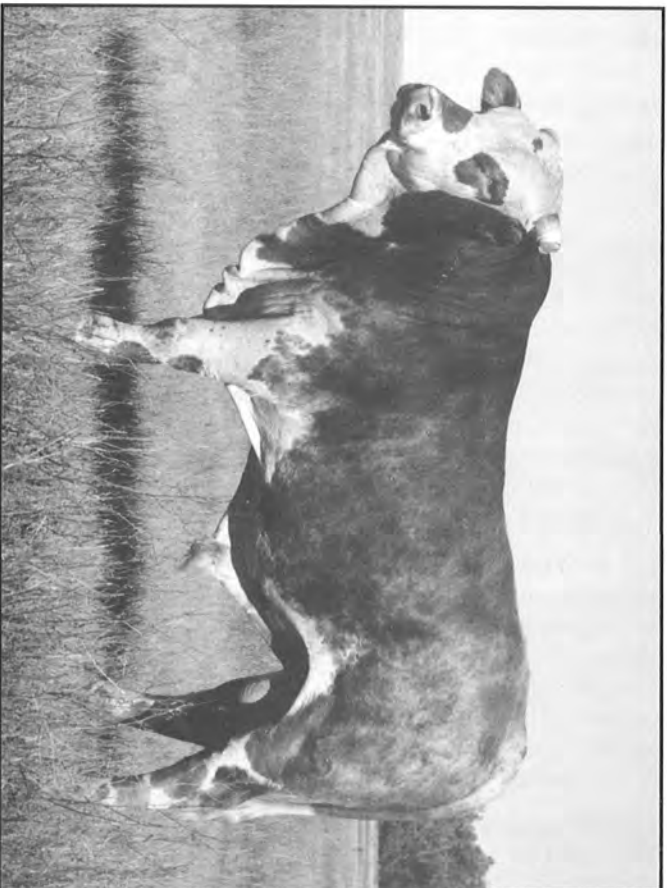
Lasater Beefmaster #9630



Lasater Beefmaster Pairs: Canyon Pasture



Lasater Beefmaster #9510



Lasater Beefmaster #1306

1994 NCA CONVENTION SCHEDULED FOR JANUARY 26-29 IN RENO

The Reno-Sparks Convention Center in Reno, NV, is the site of the 1994 National Cattlemen's Association Convention and Trade Show.

"Discover the Advantages," is the theme for the convention. "The convention is the only national policy-setting meeting for the cattle industry," said NCA President Roger Stuber, Bowman, ND.

"We will bring in expert speakers to share their experience with cattlemen. We also will ask convention attendees to share their experience. We hope that cattle producers will learn something new that will help improve their operations and their bottom lines."

While in Reno, cattlemen and cattlemen will have the opportunity to help determine the industry's policies for the coming year, participate in educational seminars and enjoy a wide variety of entertainment, featuring Kathy Mattea.

The convention will include meetings of NCA's committees and councils and member action on major policy issues facing the cattle industry. NCA policies for the coming year will be adopted at the annual business meeting Saturday, Jan. 29. In addition, the 1994 officers will be elected at the annual business meeting.

Three prestigious awards will be presented during the NCA convention, including the Environmental Stewardship Award, the Cattle Businessman of the Year,

and the Top Hand Award for membership recruitment.

A feature at last year's convention, brought back by popular demand, will be the "Cattlemen's College", which will include a wide variety of educational seminars designed to help participants gather cutting-edge information on topics such as Integrated Resource Management, total quality management for feedlots, the environment, genetic management, Beef Quality Assurance and spokesperson training for cattlemen. The "Cattlemen's College" is scheduled for Wednesday, Jan. 26.

The huge NCA Industry Trade Show, featuring more than 200 exhibitors and over 400 booths, will be open Thursday through Saturday in conjunction with the convention. Companies will show and demonstrate products, services and equipment of interest to cattlemen.

Cattle-Fax will hold its annual cattle-industry outlook seminar on Saturday, Jan. 29. Cattle-Fax analysts and speakers will examine the factors expected to determine beef supply, consumer demand and cattle prices in the 1990's.

In conjunction with the NCA meeting, the American National CattleWomen, Inc. will also hold its annual convention.

For more information about the NCA convention, contact the NCA Convention and Meetings Department at 303-694-0305.

CONGRESSIONAL STAFFS GET TASTE OF BEEF

NCA's Political Education Fund last week co-sponsored the eighth annual "Cattle, Corn and Cotton" picnic for congressional staff and their families at Aryshire Farm, owned by Tommy and Mary Stokes in northern Virginia. The National Corn Growers Association and the National Cotton Council also co-sponsored the event that more than 450 congressional staff members and guests attended.

Hamburgers were provided by ConAgra Inc. and Cargill Inc. supplied barbecued brisket sandwiches. Wine was donated by Celebrate America. The annual "Cattle Corn and Cotton" event provides an excellent opportunity for NCA staff to visit informally with key congressional staffers about issues concerning the beef industry.

WELCOME NEW MEMBERS

KANSAS

BLAKE III BEEFMASTERS

Ralph Blake
RR2, Box 214
Oskaloosa, KS 66606
913-863-2892
Rendition: 3
Origin: Dale Glenn
1994 Membership

TEXAS

RAFTER BEEFMASTERS

Lila Ramsey
Box 366
Quitaque, TX 79255
806-455-1342
Rendition: 14
Origin: Greg Ramsey
1994 Membership

MEXICO

Ganadera Vaquerias S. De R.L. De C.V. VAQUERIAS BEEFMASTERS

Octavio Javier Lopez Marquez
Domicilio Conocido
Hacienda De San Pedro Vaquerias
MP10. De Atotonilco El Grande
Hidalgo, Mexico 43300
011-525-606-52-55
Rendition: 16
Origin: Guillermo Ozuna Saenz
1994 Membership

BUYERS' AND SELLERS' GUIDE

COLORADO

For Sale: Weaned heifers reds and brockle - big and fertile. \$560.00 per head. Lasater, Musser and Snowflake bloodlines. **Till 1/1/94**

CUNNINGHAM BEEFMASTERS

Harold Cunningham
Rt. 1, Box 113
Crawford, CO 81415
303-921-6241

MISSOURI

For Sale: Weaning age bulls, select now. 18 to 20 month old bulls. 5 POLLED cows, start calving end of January, 2-5 year olds.

Roy & Tanya Schoenbeck

Rt. 1, Box 158
Bourbon, MO 65441
314-732-4590

NEW MEXICO

For Sale: Bankers to pay. Bull and heifer calves. Priced right. Neal Mortensen, Leon Autrey and Shockey bloodlines.

SHOCKEY BEEFMASTERS

Pete Shockey
148 Alamotero
Alamogordo, NM 88310
505-437-7630 (Evenings)

TEXAS

For Sale: Fifteen Yearling Heifers; Twelve: 2-Year Old Heifers; Six - 2-Year Old Bulls; Ten Yearling Bulls. From Brucellosis Certified Herd.

BASSETT BEEFMASTERS

P.O. Box 690
Alto, TX 75925
409-858-4076

For Sale: Bred Females.

CASEY BEEFMASTERS

Watt Casey, DVM
Box 458
Albany, TX 76430
915-762-2440

For Sale: 20 service age bulls. \$1,000 to \$1,500 per bull. All sired by Casey bulls.

Bunky Smith

Rt. 1, Box 79
Detroit, TX 75436
903-632-5760

Congratulations to Mamie & Milford Denetclaw on the birth of Matthew a baby boy, born October 14, 1993 weighing 8lbs. and 13 oz.

? INQUIRIES ?

Tele	ALABAMA B. T. Williams P.O. Box 11 Epes AL 35460	PF	Brad Burkett P.O. Box 272 McCrory AR 72101	ED	James Shaw c/o Atascadero High School F.F.A. 1 High School Hill Atascadero CA 93422	PF	Pat L. Davis Rt. 2, Box 4937-0 Crawfordville FL 32327	BF	IDAHO R. J. 388 Garrett Road Bellevue ID 83313
PF	Robert B. Caine Rt. 1, Box 23 Safford AL 36773	MM	Josh Roach Rt. 1, Box 369 A7 Texarkana AR 75502	CSC	Manuel Resendes 24631 W. Henry Miller Ave. Las Banos CA 93635	PF	Leonard L. Mosley Timberlake Trailer Park 2600 W. Michigan Ave. Lu460-C Pensacola FL 32526-2279	Tele	Vern R. Poupon 2300 South Locust Grove Rd. Kuna ID 83634
PF	Benjamin Elmore St. Rt. Box 66 Frankville AL 36538	MM	Lance Bond P.O. Box 192 Cave Springs AR 72718	DJ	COLORADO Kristy Bunker 60725 Rd. AA Moffat CO 81143	MM	Robert L. Hall 5139 Colbert Rd. Lakeland FL 33813	DJ	Mike Miller HC 63, Box 1771-1 Challis ID 83226
PF	Joe Townsend 105 Martin Drive Athens AL 35611	DJ	R. Gorzkowski RR1, Box 386 Green Forest AR 72638-9437	WLJ	Keith Mitthum P.O. Box 800 Canon City CO 81215-0800	PF	GEORGIA John R. Farris 177 Carlton Terrace Athens GA 30606	PF	ILLINOIS Gene Strenming 1705 Nita Lane Jacksonville IL 62650
CCYB	ARIZONA Leroy Sampson 12235 N. Peaks Pkwy. Flagstaff AZ 86004	ED	Melissa Smallwood Rt. 6, Box 51-A Mena AR 71953	Tele	John B. Goulding P.O. Box 29282 Thornton CO 80229	PF	Pineneedle Farms P.O. Box 41 Willacodchee GA 31650	BF	Neil Anderson 305 Clark Scales Mound IL 61075
PF	ARKANSAS Gerald Youngblood Rt. 1, Box 284 Horatio AR 71842	ED	CALIFORNIA Linda Valadao 515 Sedro Tulare CA 93274	BF	CONNECTICUT George W. Crossman, III 7 West End Court Old Greenwich CT 06870	PF	Frankie K. Howell Rt. 1, Box 1810 Jeffersonville GA 31044	DJ	C. Richard Peasley Farm RR 1, Box 117 Stronghurst IL 61480
PF	Glenn Grimes Rt. 3, Box 110A Ashown AR 71822	WLJ	Keyhole Livestock Marty Gragg P.O. BOX 865 Loomis CA 95650	ED	DELAWARE Amy Smith Rd 2, Box 39B Frederica DE 19946	Tele	Ron Glasgow 1447 Springleaf Circle Symrna GA 30080	Tele	IOWA Harold Ruden Box 1306 LaMars IA 57031
PF	Vernon Carter WC 64 15395 S. Stonewall Prairie Grove AR 72753-9371	CSC	David Brewer 10520 Shasta Blvd. Los Molinos CA 96055	ED	FLORIDA Jamie Coughlin 1525 Britton Rd. Lynn Haven FL 32444-3311	PF	Pelem Sykes Route 4, Box 92 Statesboro GA 30458	DJ	Max Erbes Rt. 1, Box 44 Fontanelle IA 50846
ED	Phillip Lee Hayes 20637 Groth Road Springdale AR 72764	WLJ	Fred D. Figone 5250 Dulzura Ave. Atascadero CA 93422	BF		PF	Rick Roberts 146 Woodhaven Dr. LaFayette GA 30728	WLJ	KANSAS Willie Creamer P.O. Box 252

? INQUIRIES (CONTINUED) ?

<p>KANSAS (continued) Tele Bruce Sampson 16235 W. 183rd St. Olathe KS 66062</p> <p>DJ H. L. Rogers Rt. 1, Box 117 Cedar Point KS 66843</p> <p>DJ Thomas E. Alexander P.O. Box 153 Council Grove KS 66846</p>	<p>PF MISSISSIPPI Luke Frazier Rt. 1, Box 97 Satullo MS 38866</p> <p>PF Covert D. Henry Rt. 4, Box 19 Union MS 39365</p> <p>PF Claude C. Cagle Rt. 3, Box 49 Senatobia MS 38668</p> <p>BF Wendell H. Johnston Cedar Ridge Farms Rt. 1, Box 45 G19 Summit MS 39666</p> <p>PF John M. Anderson Rt. 2, Box 68-A Jacobs Rd. Poplarville MS 39470</p> <p>MR MISSOURI Simpson Farms Route 1, Box 1570 Potosi MO 63664</p> <p>PF Fred Naxera III RRI, Box 120 Louisiana MO 63353</p> <p>MR Elvis Stimpfel RRI, Box 193 Higginsville MO 64037</p> <p>MR Jack A. Jobe Jr. 4015 Blue Ridge Blvd. Independence MO 64052</p> <p>DJ James Boggs 5929 State Rd. A Highbee MO 65257</p> <p>BF Brian Heisner Rt. 2, Box 209 Mt. Vernon MO 65712</p> <p>BF Justin Webster HC Rt. 1, Box 50 Neelyville MO 63954</p> <p>MR Jerry Rogers 461 S. Monroe Lebanon MO 65536</p> <p>CG Bill Bisbee 720 N. Bly Rd. Independence MO 64056</p> <p>DJ MONTANA Mac Tooke Box 447 Ekalaka, MT 59324</p> <p>LNM Billy Schall 492 Schall Lane Arlee, MT 59821</p> <p>Tele Dave Wagner HC 42, Box 640 Busby MT 59016</p> <p>MM NEW MEXICO Edward Knous 42441 A-48 P.O. Box 249 Hagerman NM 88232-0249</p> <p>DJ NEW YORK Ken Seiferth HC 62, Box 48Z East Branch NY 13756</p>	<p>PF NORTH CAROLINA Harold F. Miller Rt. 3, Kay Rd. 124 Lawndale NC 28090</p> <p>DJ OHIO John Shelton, Jr. 4557 Lexington Road West Alexandria OH 45381</p> <p>DJ Charles V. Anderson 789 Barrett Road Greenfield OH 45123</p> <p>BF OKLAHOMA Don Brauchi Rt. 2 Box 163 Sayre OK 73662-9802</p> <p>DJ Mark Slemple Rt. 1, Box 39 Gracemont OK 73042</p> <p>Tele John Thomas 3141 E. Xyler Tulsa OK 74110</p> <p>PF SOUTH CAROLINA Kenneth Roberts Rt. 3, Box 35 Galivanti Ferry SC 29544</p> <p>PF Malcolm Campbell 1299 E Hwy 9 Loris SC 29569</p> <p>PF R. D. Kennedy Rt. 6, Box 524-B Thomasville SC 27360</p> <p>PF Robert Kifer 1909 Leadenwah Road Wadmalaw Island SC 29487</p> <p>DJ SOUTH DAKOTA Judy Parker P.O. Box 13 Geddes SD 57342</p> <p>Tele TENNESSEE Roy Bozeman P.O. Box 190 Huntington TN 38344</p> <p>PF Scott Metz 206 Pleasant Hill Rd. Bulls Gap TN 37711</p> <p>PF Henry Hatfield Rt. 4, Box 265 New Tazewell TN 37825</p> <p>PF Stacy Tuck P.O. Box 296 Hillsboro TN 37342</p> <p>WLJ Howard Abrams 103 Pecan Valley Collierville TN 38012</p> <p>PF Ralph Brown Rt. 5, Box 258 Tazewell TN 37879</p> <p>PF Stacey Weaver RT. 1, Box 468 Selmer TN 38375</p> <p>PF Rickey Clenney 225 Old Reagan Rd. Reagan TN 38368</p> <p>RM TEXAS Wayne King Box 222 Bronte TX 76933</p>	<p>PF Pete Maniscalco 14607 Boudreaux Rd. Tomball TX 77375-7532</p> <p>CM Graham Ranch 1313 Ferris Rd. Lancaster TX 75146</p> <p>PF Melvin Crouch 707 E. Micham Malakoff TX 75148</p> <p>PF Terry Landan 750 FM 2538 Seguin TX 78155</p> <p>MM G. R. Chapman 2319 Hawthorne Amarillo TX 79109</p> <p>Tele Mike Tooley 11206 Bayou Place Dr. Houston TX 77099</p> <p>Tele Dekayle Rauch Boyd Legate 123 Rolling Hills Dr. Route 5 Sherman TX 75090</p> <p>PF Andrea Dicks P.O. Box 95 Spurger TX 77660</p> <p>PF Herbert Uhl 6215 Waltway Houston TX 77008</p> <p>CM Manuel Arriaga P.O. Box 0152 Cuero TX 77954</p> <p>ED Trinity Valley Community College Agriculture/Ranch Management Dept. 500 South Praireville Athens TX 75751</p> <p>WLJ Michael Brogan 15800 Chase Hill Blvd. #903 San Antonio TX 78256</p> <p>CM Andy Hagg Cuerno Verde Ranch Route 5, Box 345 Decatur TX 76234</p> <p>CM Ruth Palmer 512 Junell Dr. Sulphur Springs TX 75482</p> <p>CM G. R. McNallen Route 2, Box 271-A Bowie TX 76230</p> <p>Tele Jesse Harris 1012 Mountview Carrollton TX 75006</p> <p>DJ John Elsik Rt. 7, Box 89 Edinburg TX 78539</p> <p>Tele Robert Hutchins RT. 2, Box 7 Greenville TX 75402</p> <p>CM B. Charles Sweet Rt. 6, Box 354-C Cleveland TX 77327</p> <p>PF George Johnson 5502 Oriole Houston TX 77017</p> <p>PF A. M. Kramer 2706 Doney St. Houston TX 77023</p> <p>CM Praxedis Torres 110 Edwards Del Rio TX 78840</p> <p>PF Barry Townsend 1013 Robinson Rd. Conroe TX 77385</p> <p>BF UTAH Dick McCowen 637 North 200 West Clearfield UT 84015-3734</p> <p>PF VIRGINIA Bill & Shirley Dickerson Oakview Farms 105 Fairview Drive Galax VA 24333</p> <p>PF Esther Wisecarver Rt. 2, Box 237 Rustburg VA 24588</p> <p>PF Steve Sykes 11423 River Run Glen Allen VA 23060</p> <p>PF WEST VIRGINIA Jerad M. Wickline Rt. 1, Box 60A Gap Mills WV 24941</p> <p>PF Ralph Titchnell Rt. 1, Box 191 Philipp WV 26416</p> <p>PF Dennis Pritchard Wolf Pen Rd. Rt. 1, Box 324 East Lynn WV 25512</p> <p>AA COSTA RICA Imp. Franju De Cartago S.A. Aptdo. 584 Cartago, Costa Rica Central America</p> <p>C-Mex GUATEMALA Cedar Bustamante Ave. Las Americas 20-35, Zone 14 Guatemala, Guatemala, C.A. 01014</p> <p>C-Mex MEXICO Ing. Leonardo Sanchez Lepeda Av. Carranza 818 Cosamalapan, Ver. Mexico 95400</p> <p>BF PUERTO RICO Jose Javier Ballester Box 1236 Lares, Puerto Rico 00669</p> <p>MM URUGUAY Oscar L. Villa Ines Duran 879 Trinidad- Flores CP.85.000 Uruguay</p>
---	---	--	---

AA - Agricultura De Las Americas
AC - Alabama Cattleman
ACB - Arkansas Cattle Business
BF - Beef
CG - Colorado Cattle Guard
CM - Mexican Cattleman
CM - The Cattleman
CSC - Cascade Cattleman
DJ - Drovers Journal

ED - Education
FC - Florida Cattleman
KS - Kansas Cattleman
LC - Louisiana Cattleman
LMD - Livestock Market Digest
LN - Livestock News
MBC - Missouri Beef Cattle
MI - Missouri Cattle Business
MM - Mail & Miscellaneous

MR - Missouri Ruralists
NMS - New Mexico Stockman
NCA - Nat'l Cattleman Assn.
OC - Oklahoma Cattleman
PF - Progressive Farmer
RM - Ranch Magazine
RS - Record Stockman
SGF - Stockman Grass Farmer
SBP - Southern Beef Producers

TCB - Tennessee Cattleman
Tele - Telephone
TFS - Texas Farmer Stock
WFS - Western Farmer Stockman
WLJ - Western Livestock Journal
WY - Wyoming Stockman Farmer
YB - Yearbook

CORRAL OF EVENTS

- February 26, 1994** Isa Cattle Co., Inc. Spring Bull Sale.
10:00 am Producers Auction - San Angelo, Texas
Contact: Laurie Lasater at (915) 949-3763
- March 5, 1994** Panhandle New Mexico Field Day - Las Vegas, New Mexico
Contact: Charlie Duree (505) 673-2241
- September 13, 1994** Lasater Ranch - 10:00 am Bred Cow & Heifer selection
4:00 pm retired here sire auction
- September 14-15, 1994** Lasater Ranch - 8:00 am Yearling Bull Selection

FOUNDATION BEEFMASTER ASSOCIATION
100 LIVESTOCK EXCHANGE BUILDING
DENVER, COLORADO 80216
TELEPHONE (303) 294-0847

BEEFMASTER
A PLAN FOR
PROFIT



RANLY BEEFMASTERS
Ronald C. & Lanette Ranly
Route 2, Box 17
Lott, TX 76656

Published by Foundation Beefmaster Association, 100 Livestock Exchange Building, 4701 Marion St., Denver, Colorado 80216.
Mary M. Wilkinson, Executive Secretary. Editor's note: The views and opinions expressed in all articles and comments included in this publication are not necessarily those of Foundation Beefmaster Association.